

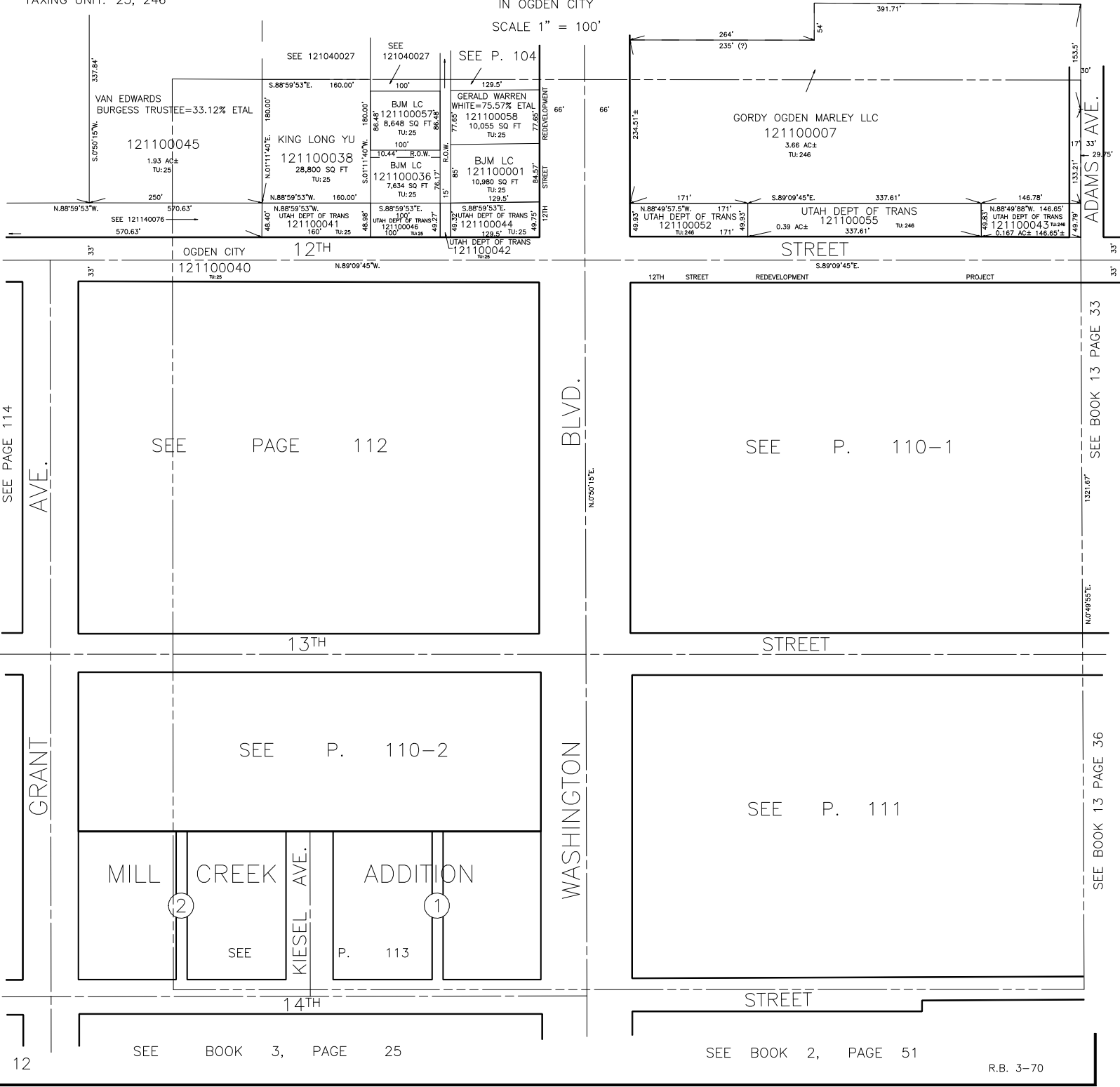
S.E. 1/4 OF N.E. 1/4  
SECTION 20, T.6N., R.1W., S.L.B. & M.

110

ALSO SEE P. 110-1, & P. 110-2

TAXING UNIT: 25, 246

IN OGDEN CITY  
SCALE 1" = 100'



SEE PAGE 114

GRANT AVE.

GRANT AVE.

WASHINGTON BLVD.

WASHINGTON BLVD.

ADAMS AVE.

SEE BOOK 13 PAGE 33

SEE BOOK 13 PAGE 36